



ELYTRA  
Graduate collection

# ELYTRA

Elytra was born from the innate anxieties and pain of hiding your true colours. Beetles have a hard shell exterior, called the elytra, that provide protection and house delicate and fragile wings within. The beetle is able to open up these shells and unfold their wings, becoming able to take flight. I have used this as an allegory for how we as people, seal away our own fragilities and vulnerabilities. We fear the judgement from others and hide away parts of ourselves we may be ashamed of. Elytra was made to encourage people to brave the uncertainties in life and embrace self acceptance and expression.









# Cyclom

*'Cyclommatus metallifer'*



Inspired by the golden stag beetle  
Yellow mikado and blue organza









# Dynastes

*Dynastes Hercules'*



Inspired by the hercules beetle  
Red and Navy mikado





# Rhina

*Mecynorrhina torquata*



Inspired by the green flower  
beetle  
Green and purple mikado









# Pseudo

*'Pseudomyagrus waterhousei'*



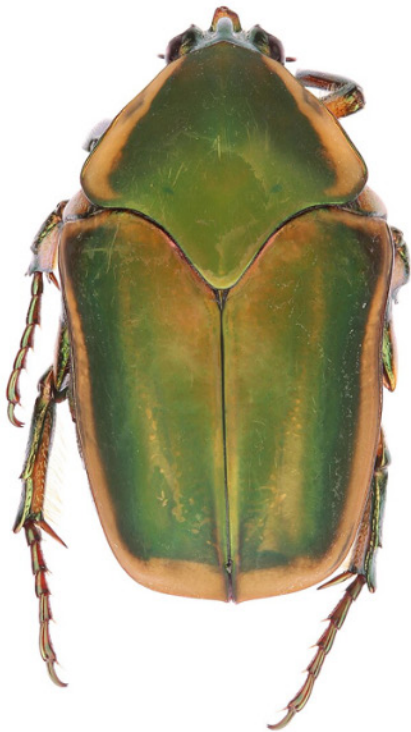
Inspired by the blue longhorn beetle  
Blue and Burgundy mikado





# Cotinus

*'Cotinus Nitida'*



Inspired by the green june beetle  
Emerald mikado and orange liquid organza



# Kingii

*'Chlamydosaurus kingii'*



The Predecessor to ELYTRA, a dress titled Kingii from my Reptilia collection. Inspired by the bold dramatic silhouette of the frilled neck lizard. The ideas explored within this collection I transferred over to my ELYTRA collection.







